


M.I.N.E.™ TRAPPING SYSTEM



OPERATIONS MANUAL

 Read this ENTIRE MANUAL prior to assembling or using this product. Failure to follow the important safety instructions and warnings in this manual may result in serious injury or death.

VERSION 4

IMPORTANT SAFETY INFORMATION

This Operations Manual contains important instructions, warnings, and safety procedures that must be understood BEFORE assembling or using the M.I.N.E.™ Trapping System. Failure to review and understand the ENTIRE MANUAL prior to assembly or use could result in serious injury or death to you or someone else.

! WARNING

CRUSH HAZARD: This device uses a wireless transmitter to remotely trigger a HEAVY DROP GATE, which can cause serious injury or death. ALWAYS secure the drop gate with the Gate Safety Clip before conducting any work on or around the gate.

ALWAYS ensure that gate area is clear BEFORE pushing the transmitter button, connecting wires inside the control box, or replacing the transmitter battery.

CHILD SAFETY HAZARD: This product can cause serious injury or death. Keep children away from equipment at all times.

! CAUTION

At least TWO PEOPLE are required to assemble and install the M.I.N.E.™ Trapping System. Assembly and installation without the assistance of another person may result in injury.

ALWAYS wear appropriate protective equipment when applicable, including eye and ear protection.

NOTICE

ALWAYS disconnect battery from control box when trapping system is not in use. Receiver is constantly in use and will drain the battery.

NEVER transport M.I.N.E.™ Gate with the battery inside the control box. Transporting the gate with battery installed will cause severe and permanent damage to both the battery and the control box electronics.

Keep control box clean and protected from moisture in order to prevent damage and to ensure proper operation of the trapping system.

CAPTURE SUCCESS MATRIX™

**STEP 1. CONDITION HOGS TO USE A FEEDER WITH
TIMER AS A DAILY FOOD SOURCE.**

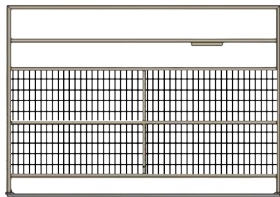
**STEP 2. CONDITION HOGS TO TRUST THE CORRAL
ENCLOSURE AS A DAILY FOOD SOURCE.**

**STEP 3. UTILIZE THE OPTIMUM TRIGGER DEVICE BASED
ON THEIR DAILY FEEDING PATTERN.**

TABLE OF CONTENTS

Important Safety Information.....	2
Equipment Inventory and Identification	4
Installation Tools and Supplies.....	5
Material List of Equipment Not Included	6
Adjusting Trigger Assembly	7
Installing Connecting Rod and Clevis	8
Installing Control Box	9
Attaching Connecting Rod to Latch	10
Mounting Antenna to Control Box	11
Building the Enclosure	12
Installing M.I.N.E.™ Post Clips	12
Installing M.I.N.E.™ Gate	13
Installing 18-60™ Panels and Posts	14
Installing 18-60™ Rigid Panels.....	16
Installing T-Post Camera Mount	17
Mounting Booster Antenna	18
Testing Gate Operation	19
Feeder Modifications	20
Replacing Long Range Transmitter Battery	21
Warranty	22

EQUIPMENT INVENTORY & IDENTIFICATION



Gate with Frame



Trigger Assembly



Control Box



Receiver



Self Tapping Screws



Connecting Rod & Clevis



Rod Adapter



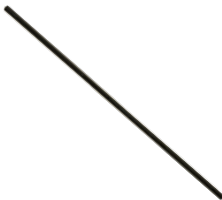
Long Range Transmitter



12 volt Battery



Safety Pin



Antenna Tube

INSTALLATION TOOLS AND SUPPLIES



Drill



20' Tape Measure



Hand Pick



T-Post Driver



Mini Bolt Cutter



3/8" Nut Driver



1/2" Socket
with Wrench



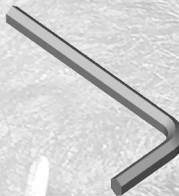
9/16" Wrench



Pliers



Screwdriver



3/32" Allen Wrench



Multi-meter



11 Gauge Steel
Galvanized Wire



8" Zip Ties



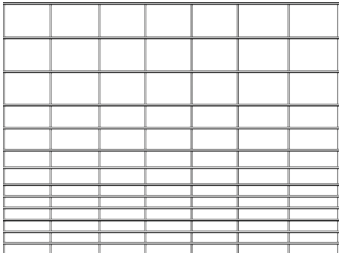
Shovel



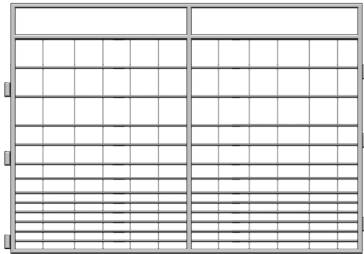
T-Post Puller

MATERIAL LIST OF EQUIPMENT NOT INCLUDED

Items available for purchase from JAGER PRO™ authorized distributors



16 ft. 18-60™ Flex Panels (6 ea)



8 ft. 18-60™ Rigid Panels (12 ea)



Feeder with Dinnerbell and Digital Timer



M.I.N.E.™ Post Clips



M.I.N.E.™ Clip Socket



7ft. T-Posts (24 ea)



M.I.N.E.™ Camera



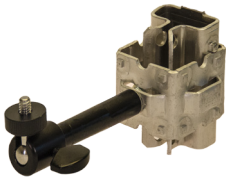
I.C.E.™ Camera



Booster Antenna



Booster Antenna Pole



T-Post Camera Mount



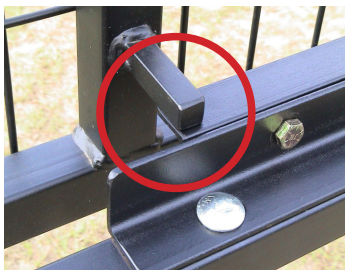
6v Battery Box

ADJUSTING TRIGGER ASSEMBLY

NOTICE

The trigger is set at the factory and should not require adjustment. However, follow these steps if the trigger needs adjustment.

Loosen the trigger assembly nuts with a 9/16" wrench.



Adjust the trigger assembly left or right until the trigger square stock is sitting on the outside edge of the trip arm. Then tighten the trigger assembly nuts with a 9/16" wrench.

Lightly tighten the bolt and nut on the trip arm using a 1/2" wrench and socket so the trip arm stays in the "up" position without falling, but can still easily move.



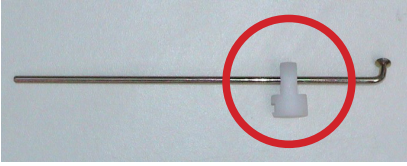
Work the trip arm up and down onto the latch to ensure there is no binding.

NOTICE

It is important the trip arm stays in the "up" position without falling. This step allows the use of both hands to raise the gate.

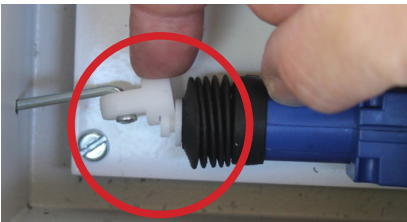


INSTALLING CONNECTING ROD & CLEVIS



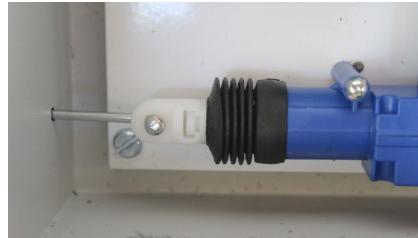
Push the 1/8" connecting rod through the plastic clevis.

Slide the connecting rod through the actuator hole inside the control box.



Align the slots and gently snap the clevis onto the actuator arm.

Rotate the connecting rod and clevis to this position. Work the rod back & forth to ensure there is no binding.



NOTICE Never transport the M.I.N.E.™ Gate with battery inside the control box or severe damage to electronics and battery will occur. Remove battery during transport and always disconnect when not in use.

INSTALLING CONTROL BOX

Place the control box onto the frame in this position.



Secure the rod adapter with pliers. Turn the set screw with a 3/32 Allen wrench to break the Loctite® seal at threads.

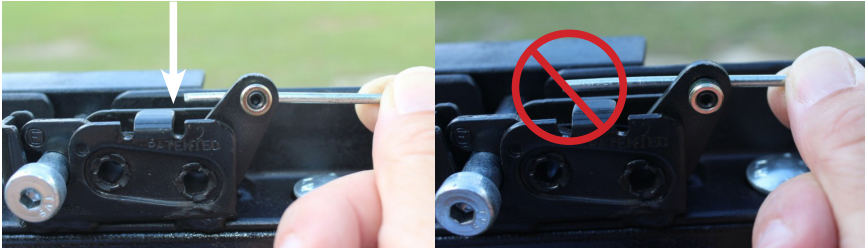
Place the rod adapter through the latch arm. Guide the connecting rod through the rod adapter while sliding the control box into place. See “Attaching Connecting Rod to Latch” on next page before tightening rod adapter.



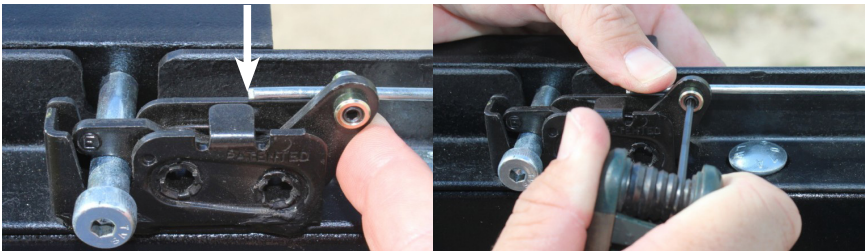
Ensure the control box is tight against the trigger assembly. Using a 3/8" nut driver and drill, secure the control box to the frame with four #14 self tapping, 3/4" long screws.

ATTACHING CONNECTING ROD TO LATCH

Notice the actuator arm has more than one inch of travel. The actuator arm and connecting rod is shown below fully “IN” and fully “OUT”.

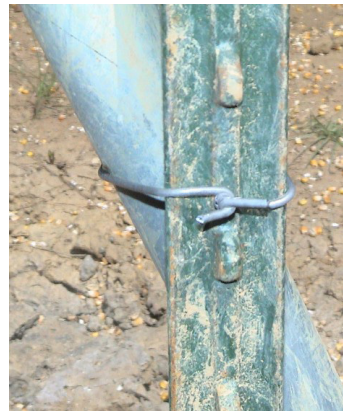


Do not secure the rod to the latch with the connecting arm all the way out or it will hit the bracket on the latch assembly when triggered. The illustrations below show the proper setting on the right side of the bracket. Using a 3/32 Allen wrench, turn the set screw inside the rod adapter to secure the connecting rod to the latch.



SITE SELECTION & PRE-BAITING

Erect feeder and secure each leg with a T-post and 11 gauge galvanized steel wire. Following the steps of our “Capture Success Matrix”, build an enclosure only after the hogs trust the area as a food source for multiple days in succession.

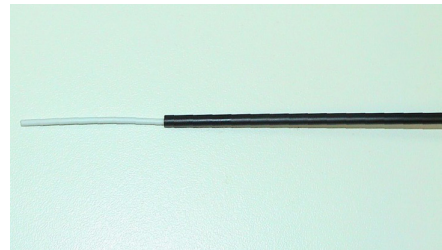


MOUNTING ANTENNA TO CONTROL BOX

Carefully feed the antenna through the rubber grommet without damaging the receiver inside the control box.



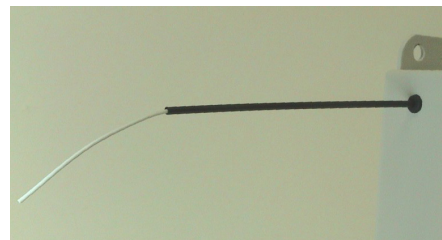
Feed the antenna wire through the 1/8" diameter antenna tube until it clears the opposite end.



Slide the antenna tube into the rubber grommet until it becomes visible inside the control box. This waterproof seal will help keep electrical components clean and dry during field use.



The antenna wire in this position rests between two horizontal gate frames and will receive a wireless signal from 250 meters (or 275 yards) when using the long range transmitter.



BUILDING THE ENCLOSURE

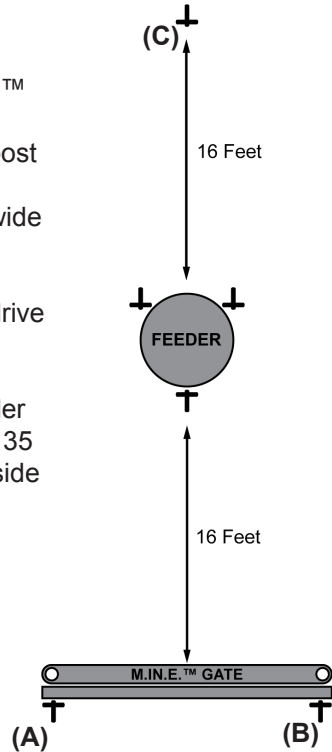
! CAUTION

Building and installing the enclosure requires at least two people. Assembly and installation without the assistance of another person may result in injury.

1. The opening for the eight foot wide MINE™ gate should face the natural direction hogs travel to the bait site. Drive a 7 foot long T-post measuring 16 feet from the feeder. This will become the left support post for the 8 foot wide MINE gate **(A)**.

2. Put the gate in position to measure and drive the right support post **(B)**.

3. Measure 16 feet from the rear of the feeder and drive another 7 foot long post to form a 35 foot triangle. This triangle will begin the outside dimension of the trap enclosure **(C)**.



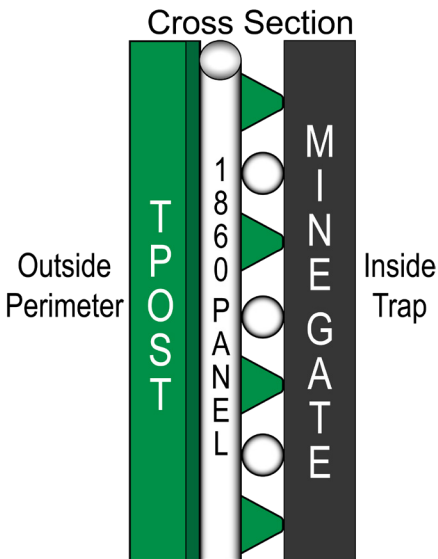
INSTALLING M.I.N.E.™ POST CLIPS

Secure 18-60™ Panels to posts in seconds using a drill and M.I.N.E.™ Post Clips. Standing inside the trap enclosure, install a post clip (11 gauge) around the post and panel **(A)**. Insert a M.I.N.E.™ Clip Socket onto the post clip **(B)**. Press against the panel while drilling clockwise at full speed **(C)**.



INSTALLING M.I.N.E.™ GATE

Trap shy adult hogs will not step over a threshold. Dig a two-inch trench with a hand pick to conceal the bottom gate frame (A). Use a level to ensure the drop gate remains square for smooth operation. Cover the threshold with dirt and camouflage to blend with surrounding area (B).



The panel joint at the gate support post is the weakest link if not secured properly.

Ensure the panel's vertical 1/4" steel rods are on the outside of the enclosure (against the post) and the horizontal steel rods are on the inside.

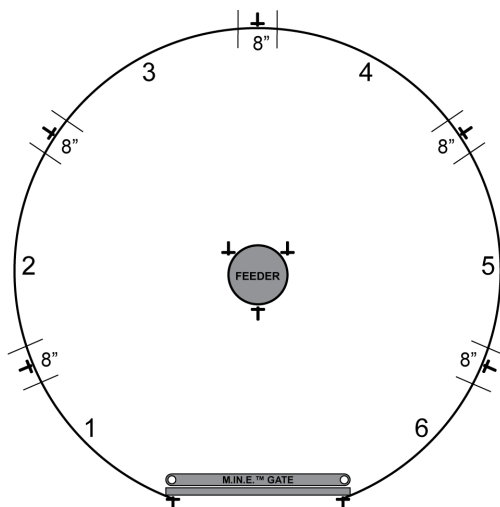
Use the post lugs to lock the vertical steel rod between the post and gate support.

Pull these twists as tight as possible and reinforce the joint with six anchor points of double stranded 11 gauge galvanized steel wire or a single strand of 9 gauge galvanized steel wire.

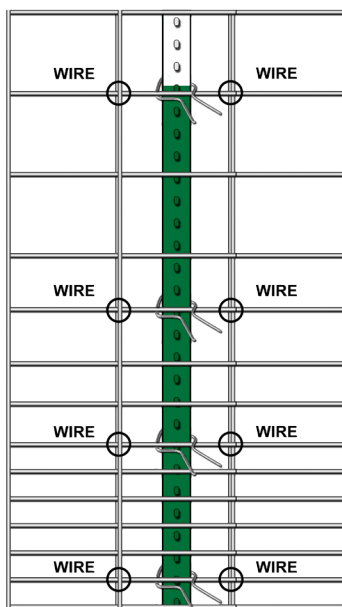


INSTALLING 18-60™ PANELS & POSTS

Erect six each 18-60™ panels in a circular shape around the feeder. Each panel is 16 feet long with an eight inch overlap.

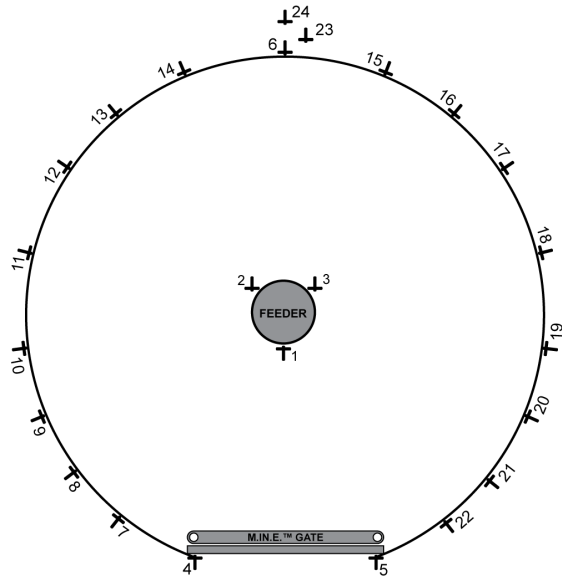


Ensure all T-post lugs face inward to secure the panels from lifting up. Posts should be driven in the center of each eight inch panel overlap.

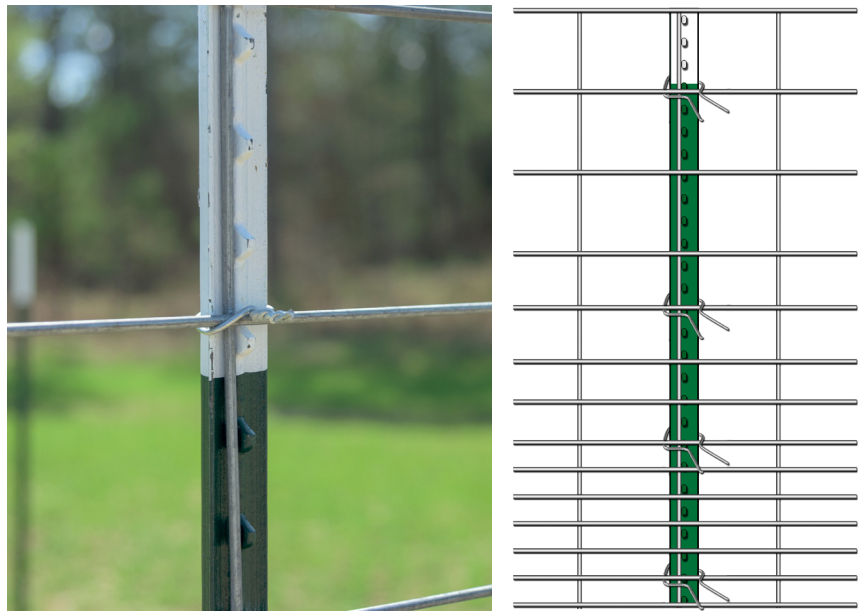


Each post should secure the panel with at least four M.I.N.E.™ Post Clips. The diagram (above right) shows the proper anchor points needed for maximum strength.

This diagram illustrates the proper order to drive posts. Place the camera on #23 and booster antenna pole on #24 outside the enclosure so these devices are not damaged when hogs are captured. Posts should be driven every four feet for maximum strength.



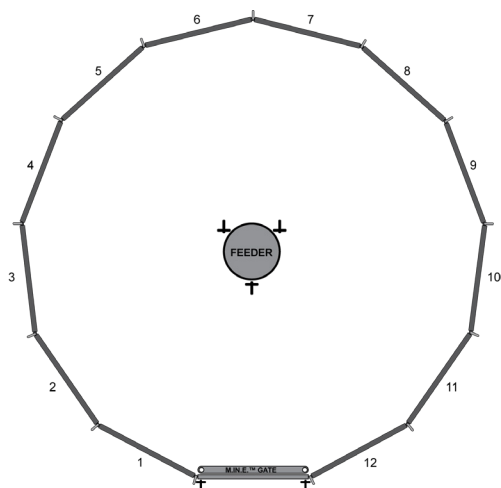
Ensure all T-post lugs face inward to secure the panels from lifting up. Posts should be driven in line of a vertical support on single panels.



Each post should secure the panel with at least four M.I.N.E.™ Post Clips. The diagram (above right) shows the proper anchor points needed for maximum strength.

INSTALLING 18-60™ RIGID PANELS

This diagram illustrates the proper order to erect the rigid panels. Start at one side of gate and position rigid trap panel #1. Position panel #2 next to panel #1. Secure panel #2 to panel #1 using the 5' long connecting stake. Repeat steps to position and secure all twelve panels in a circular shape around feeder.



Ensure one-inch steel frames are facing out and the 18-60™ panels are facing inside trap enclosure.

Secure rigid trap panel to gate using the 5' long connecting stake. Secure panel #12 to gate using 5' long connecting stake.



NOTICE

Do not drive stakes into the ground until all twelve trap panels are positioned. Drive all connecting stakes into the ground with a sledge hammer.

INSTALLING T-POST CAMERA MOUNT

! CAUTION

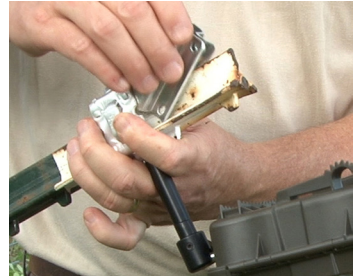
Thread bracket no more than three complete rotations or it may damage the camera housing.

Align the threads of the T-post mounting bracket to the camera mounting port. Tighten securely using the adjusting nut.



Mount the M.I.N.E.™ Camera to post #23 outside the enclosure according to the page 13 diagram. Lower the square collar at a diagonal over the post spine and studs.

Lower the collar into position between any two studs. Insert the mounting wedge between the post spine and square collar.

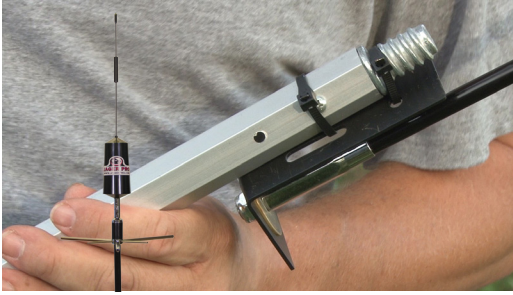


Tighten the mounting wedge thumb screw against the post spine to secure the camera mount.

Align the camera by loosening the ball head set screw and centering the view on the ground beneath the feeder legs. Tighten the ball head set screw to secure the camera.



MOUNTING BOOSTER ANTENNA



Mount the booster antenna pole to post #24 outside the trap enclosure according to the diagram on page 14. The pole is 8 feet tall and telescopes to 16 feet.

Secure the booster antenna cable to the antenna pole with zip ties to reduce wind noise. Secure the booster antenna cable to the post with zip ties below the camera antenna port to prevent rainwater from pooling on top of the waterproof boot.



TIMING TRANSMITTER TO RECEIVER

The long range transmitter frequencies are timed to the receiver during assembly and quality control. Users may time transmitters to multiple receivers to close more than one gate on a trap enclosure. Timing the M.I.N.E.™ camera to the control box is covered in the M.I.N.E.™ camera's Operations Manual.

Timing Steps:

1. Press and release the receiver button **(A)** and the red light **(B)** stays on.
2. Press and hold transmitter button for **2 second** until the light on the transmitter turns on. The receiver light **(B)** will flash three times and shut off.



NOTICE

Pressing and holding the receiver button **(A)** until red light **(B)** blinks will clear sync memory.

TESTING GATE OPERATION

Ensure the trip arm is in the fully upright position. Raise the gate with both hands. Hold the gate in the fully raised position with the left hand and lower the trip arm's striker into the latch with the right hand. Ensure the latch is fully closed by pressing the latch arm upward.



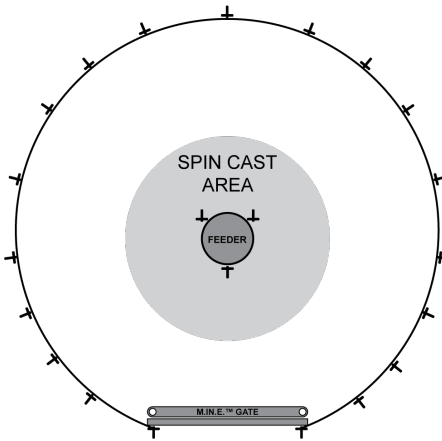
WARNING CRUSH HAZARD: Drop gate can cause serious injury or death. ALWAYS ensure that gate area is clear BEFORE testing gate operation.

Level the gate by checking the distance at this location on both sides. Slightly adjust if needed to square the gate to frame. Stand clear and press the transmitter button for two seconds. The gate should fall without binding.



FEEDER MODIFICATIONS

The trap enclosure is built with the gate opening 16 feet from the feeder. This will leave approximately 20 feet of spin cast area without throwing bait outside the enclosure. Below is an example using a JAGER PRO™ Dinner Bell™ feeder modification to prevent bait being thrown outside of the trap enclosure. This step keeps bait at least 10 feet away from the entrance, teaching hogs to trust the entire enclosure and ensures they are too far away from the gate to escape when the gate is triggered. It also produces a distinct sound which hogs will learn to associate with daily feeding.

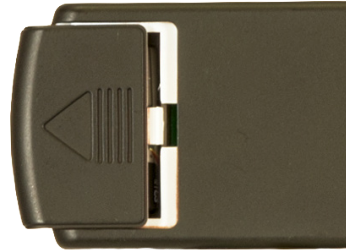


REPLACING LONG RANGE TRANSMITTER BATTERY



The long range transmitter will send a wireless signal 250 meters (or 275 yards) to the control box receiver. This device uses a 12 volt alkaline A23 battery.

Turn the transmitter over and slide the housing cover down to expose the battery compartment.



Replace the A23 battery with the positive terminal facing right and the negative terminal facing left towards the spring.

NOTICE

Ensure the negative spring terminal does not touch the side of the battery.

Return the housing cover to secure the battery compartment. The red light should emit when the button is pushed for **2 seconds**. Test the control box receiver and M.I.N.E.™ Gate trigger assembly for operation after replacing battery.



WARRANTY

Limited Warranty: JAGER PRO™, LLC warrants the Product to be free from malfunctions and defects in both materials and workmanship for one (1) year from the date of purchase (“Warranty Period”). JAGER PRO™, LLC will repair or replace, at its option, the Product if it fails to function properly during the Warranty Period, subject to the conditions and/or limitations stated herein. Such repair or replacement is your sole remedy under this Limited Warranty.

Limitations: Limited Warranty service will not be provided unless the Product, returned in the manner set forth below, is accompanied by a copy of your original dated sales invoice. JAGER PRO™, LLC reserves the right to require you to provide your original dated sales invoice. Products purchased from non-authorized dealers may not qualify for warranty coverage.

This Limited Warranty does not cover the following:

- a. any defect in or damage to the Product that occurs due to mishandling of the Product;
- b. any defect in or damage to the Product that occurs due to repair, modification, or other similar activity after your purchase of the Product;
- c. any defect in or damage to the Product that occurs due to the transport, dropping, shock, or other similar activity after your purchase of the Product;
- d. any defect in or damage to the Product that occurs due to careless or improper storage, or improper use or maintenance of the Product;
- e. any defect in or damage to the Product that occurs due to foreign objects such as dirt or grime, sand, water or liquids entering the inside of the Product; and
- f. any defect to the Product related to your failure to follow proper operating instructions provided by JAGER PRO™, LLC, claims made after the Warranty Period, or your failure to follow the instructions set forth below with respect to return of the Product to JAGER PRO™, LLC.

All other express and implied warranties for the product, including the implied warranties of merchantability and fitness for a particular purpose are hereby disclaimed. JAGER PRO™, LLC expressly disclaims all warranties not stated in this warranty. Any implied warranties that may be imposed by law are limited in duration to the terms of this express limited warranty. In no event will JAGER PRO™, LLC be liable to you, or any third party, for any damages in excess of the purchase price of the product. In addition, JAGER PRO™, LLC shall in no event be liable to you, or any third party, for any direct or indirect damages or other special, incidental, exemplary or consequential damages arising out of the use or inability to use the product. Notwithstanding any terms of this Limited Warranty to the contrary, no warranty coverage shall be provided for a Product purchased from, through, or with the assistance or involvement of any Internet auction web site. JAGER PRO™, LLC reserves the right to modify its warranties prospectively at any time, in its sole discretion.

JAGER PRO™ offers a complete line of Hog Control Products, Services and Education

View our instructional video series online at



2900- A Smith Road
Fortson, GA 31808
Phone: 706-718-9789
Email: info@jagerpro.com
Website: www.jagerpro.com